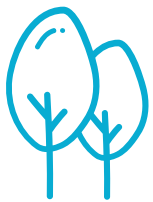


# The Collaborative Grow Program

## By the Numbers

BEF's Collaborative Grow Program was established in 2011 to streamline native plant procurement for groups advancing reforestation and plant establishment as part of ecological restoration, soil and water conservation, and habitat initiatives in Oregon's Willamette Basin. The collaborative includes watershed councils, land trusts, Tribes, agencies and NGOs.



**From an initial order of 66,000 plants over a decade ago, the program distributed:**

**+879,000 plants in 2023**

Of nearly **50 different species**

Grown by **5 different nurseries**

to **14 tree planting partners**

**Over 495,000 of those plants supporting wildfire recovery efforts throughout the Willamette**

Please contact Hannah Buehler at [hbuehler@b-e-f.org](mailto:hbuehler@b-e-f.org) if you are working in the Willamette Valley and coordinated plant procurement could benefit you! We are currently accepting orders for pick up in spring 2025 and have some plant availability for 2024.

With limited staff capacity and significant demands placed upon groups, the program offers a means to leverage economies of scale to:

- Reduce staff time within individual organizations and nurseries directed towards plant ordering and distribution.
- Centralize quality control and plant specification development and adaptation (i.e. minimum and maximum size specifications, target root:shoot ratios, seed source ranges).
- Increase the diversity of species grown at scale by local nurseries (the Collaborative Grow program currently offers 52 tree and shrub species) by building a clear and more reliable demand.
- Provide access to plant stock with greater genetic diversity because partners receive plant stock from numerous nurseries.
- Soften the impact of species failures in a given year due to factors such as flooded nursery fields, seed issues, etc. by facilitating species substitutions, spreading the impact of shortages across groups and supporting partners in offering plants to each other.
- Support use of bare root planting stock to reduce plant, transportation and labor costs.
- Offer financial benefits to groups that often rely on reimbursement-style grant funding and for whom carrying large balances for 5-8 months in the form of plant deposits can be difficult or untenable.



Photo Credit: Luckiamute Watershed Council